



# 9175 LANGELIER

## SAINT-LÉONARD, QUÉBEC

**BUREAU - À LOUER**  
**OFFICE - FOR LEASE**

17 000 PI. CA. DISPONIBLE - 17,000 SQ. FT. AVAILABLE

- **Bureau situé au niveau mezzanine** | Office located on the mezzanine level
- **Ascenseur privé** | Private elevator
- **Belle luminosité** | Great lighting
- **À proximité de l'autoroute 40 et 25** | In proximity to Highway 40 and 30
- **Grand stationnement** | Large parking lot



**BRASSWATER**

245, avenue Victoria,  
Suite 801  
Westmount, Qc | H3Z 2M6  
T: +1 514 535 4444  
[www.brasswater.ca](http://www.brasswater.ca)



**Zonage**  
Zoning

**Bureau | Office**

**Surfaces disponibles (pi<sup>2</sup>)**

Available Areas (sq. ft.)

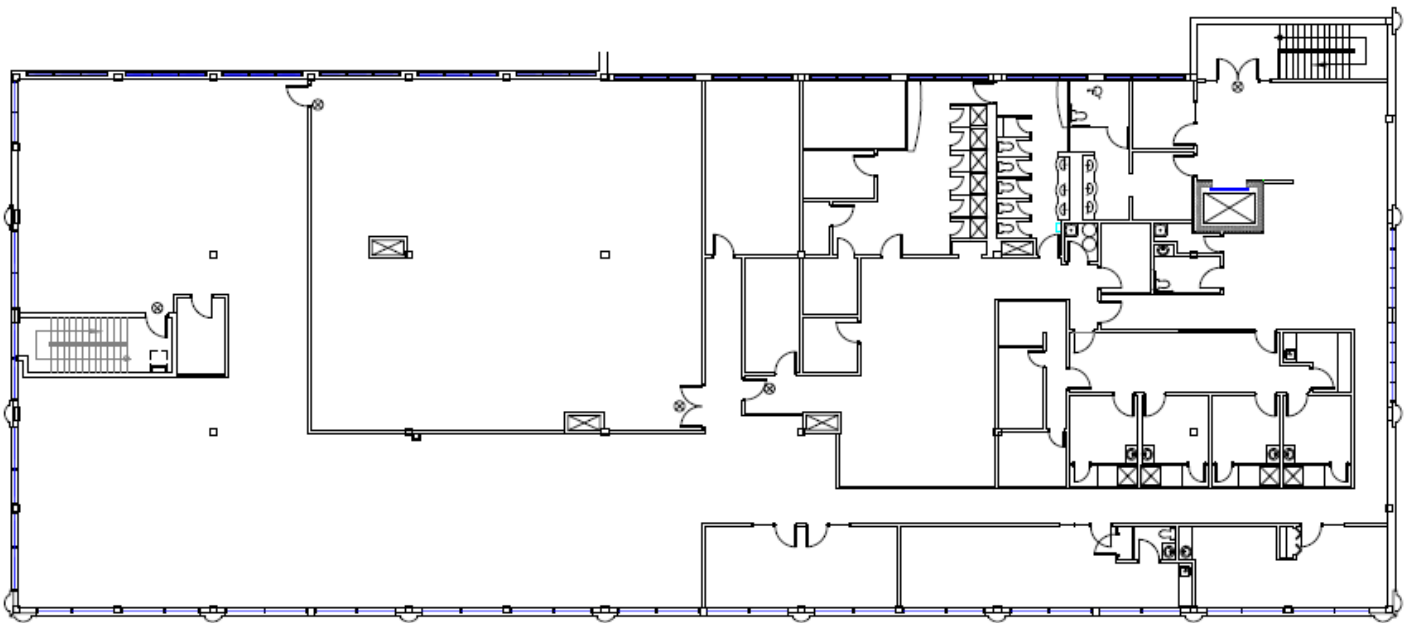
**17 000**

**Étage**  
Floor

**2<sup>em</sup>**

# PLAN DU DEUXIÈME ÉTAGE

## SECOND FLOOR PLAN



Deuxième étage  
Second floor sq. ft.









CONTACTEZ-NOUS | CONTACT US

**JORDAN ALTMAN**

Agent à la location  
*Leasing Agent*

T: +1 514 775 1234  
jaltman@brasswater.ca

---

**ÉQUIPE DE LOCATION  
LEASING TEAM**

T: +1 514 535 4444  
leasing@brasswater.ca



**BRASSWATER**

245, avenue Victoria,  
Suite 801  
Westmount, Qc | H3Z 2M6

T: +1 514 535 4444  
www.brasswater.ca