



# TERRAIN DELSON

## DELSON, QUÉBEC

INDUSTRIEL - À LOUER  
INDUSTRIAL - FOR LEASE

*JUSQU'À 587 400 PI. CA. - UP TO 587,400 SQ. FT.*

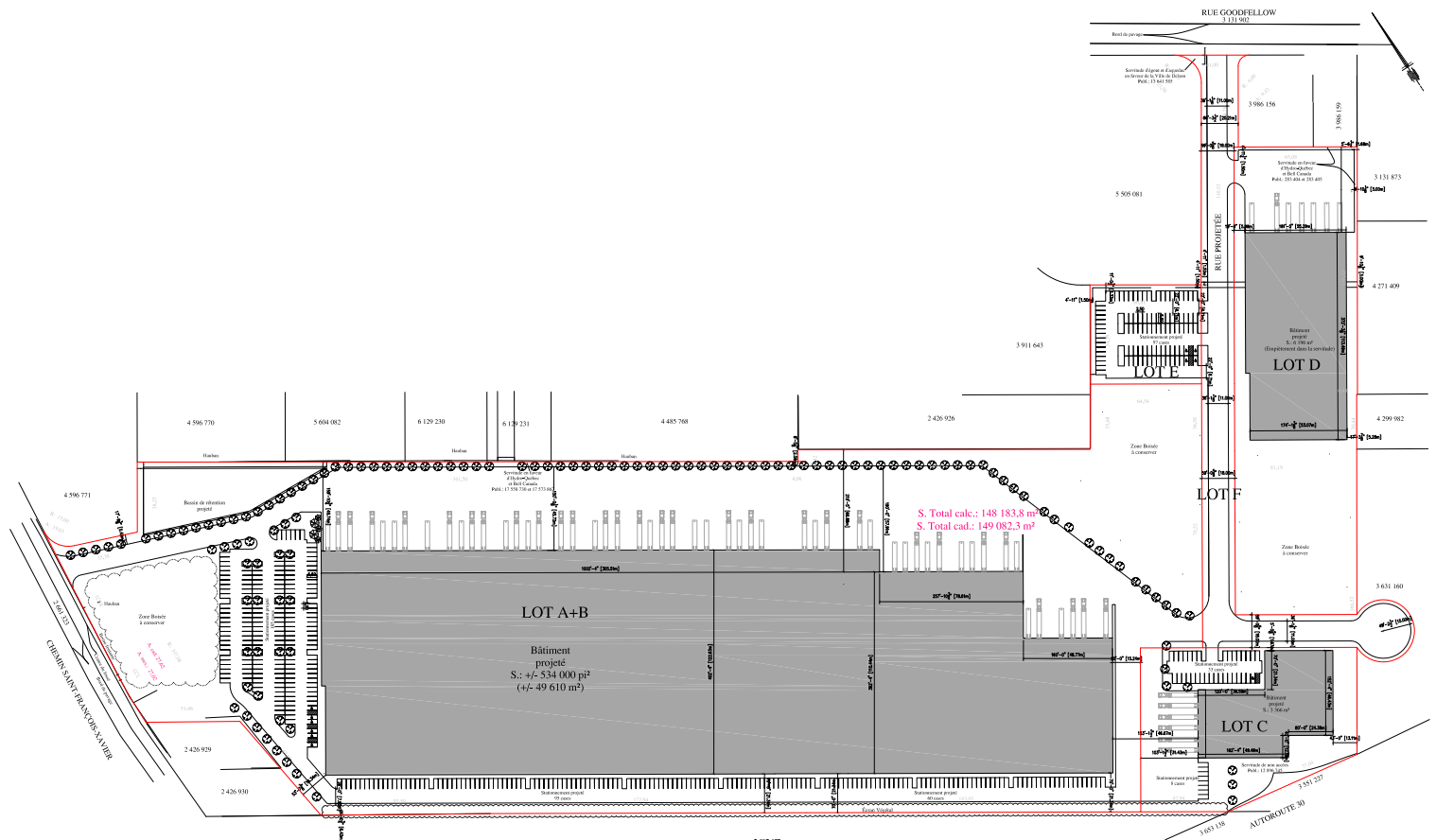
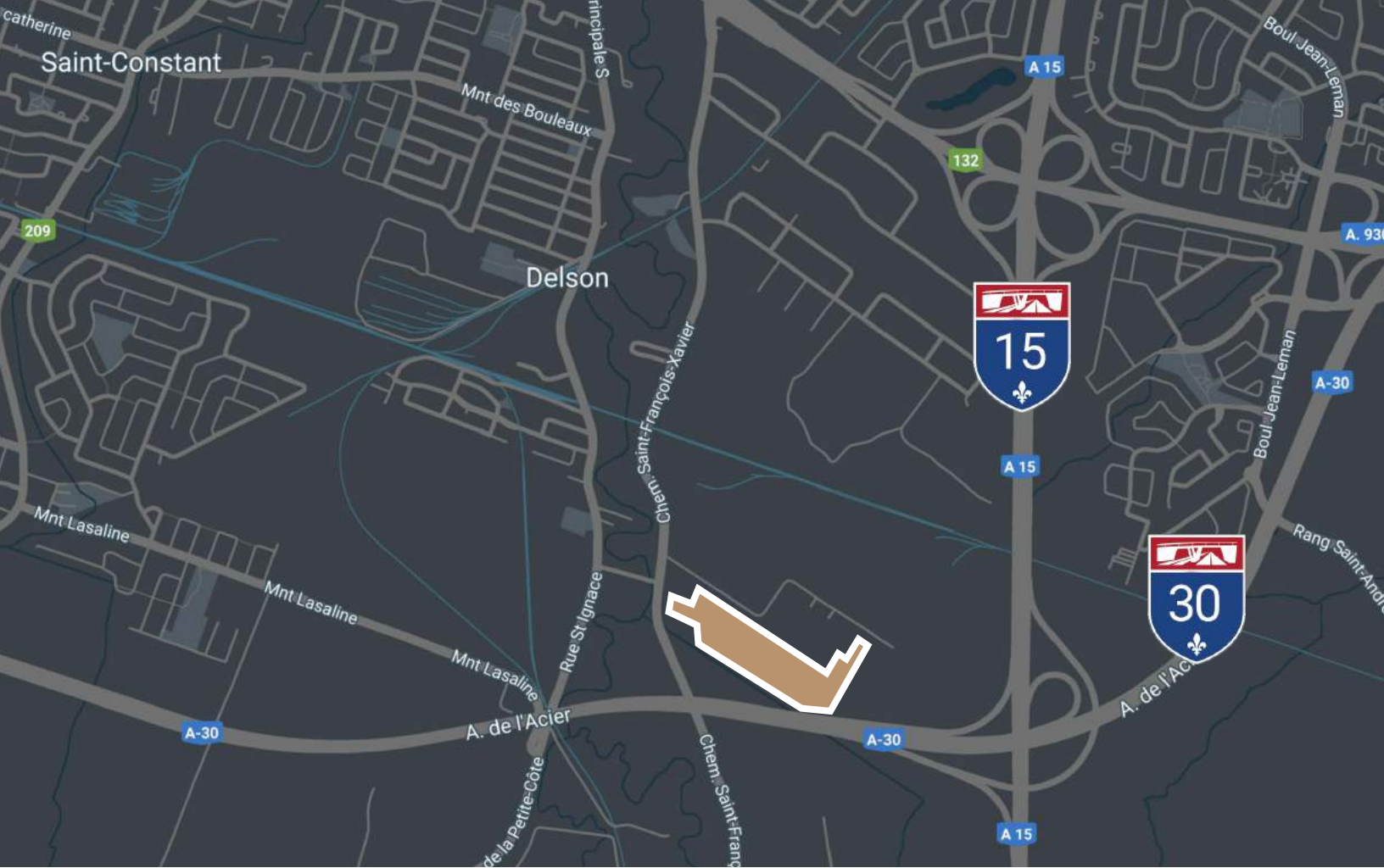
- **32' de hauteur libre** | *32' of clear height*
- **Gicleurs ESFR** | *ESFR sprinklers*
- **Espacement de la grille des colonnes : 40' x 40'** | *Column grid spacing: 40' x 40'*
- **À proximité des autoroutes 15 et 30** | *Close to highways 15 and 30*



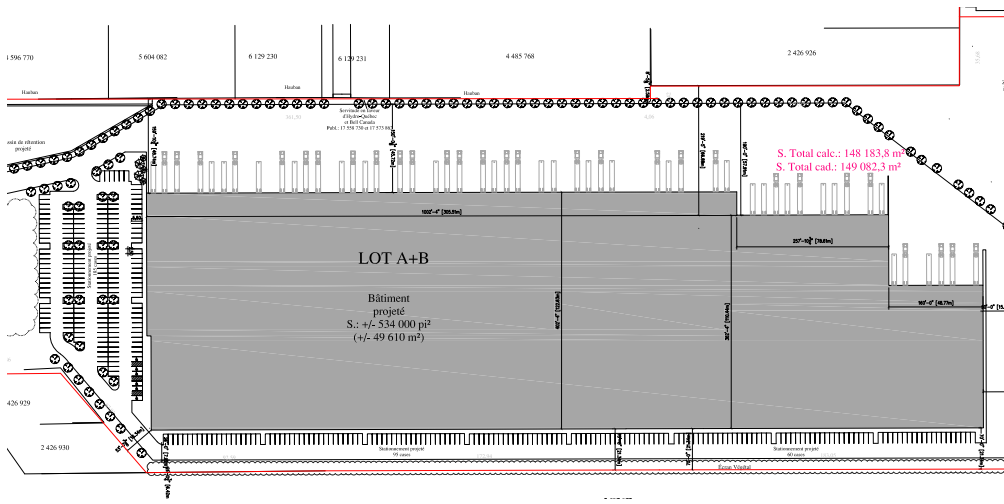
BRASSWATER

245, avenue Victoria,  
Suite 801  
Westmount, Qc | H3Z 2M6

T: +1 514 535 4444  
[www.brasswater.ca](http://www.brasswater.ca)



DÉVELOPPEMENT INDUSTRIEL  
 CHEMIN ST-FRANÇOIS-DE-XAVIER  
 DELSON, QUÉBEC



**IMMEUBLE 1**

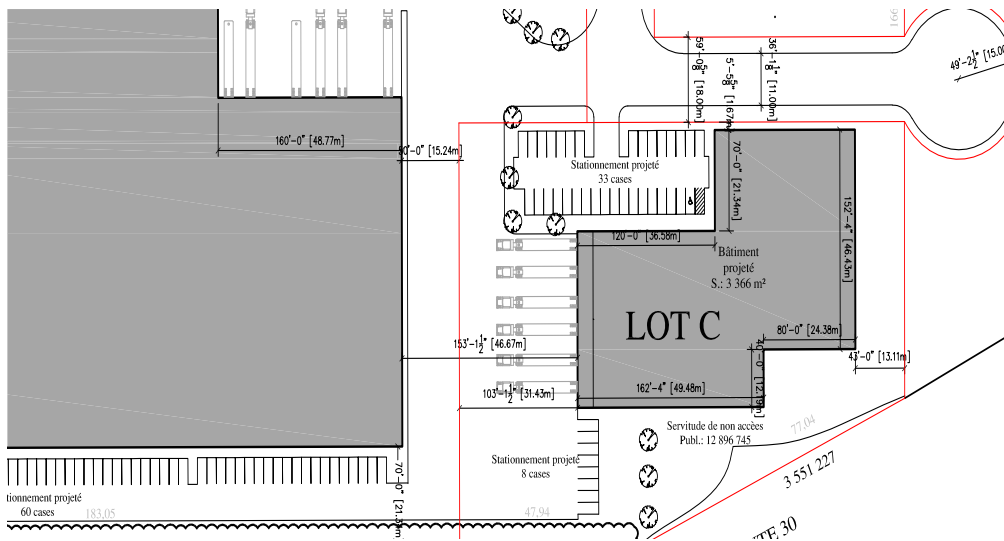
**534 000 pi. ca.**

52 quais de chargement et portes au sol  
155 places de stationnement

**BUILDING 1**

**534 000 sq. ft.**

52 loading docks and drive-in doors  
155 parking stalls



**IMMEUBLE 2**

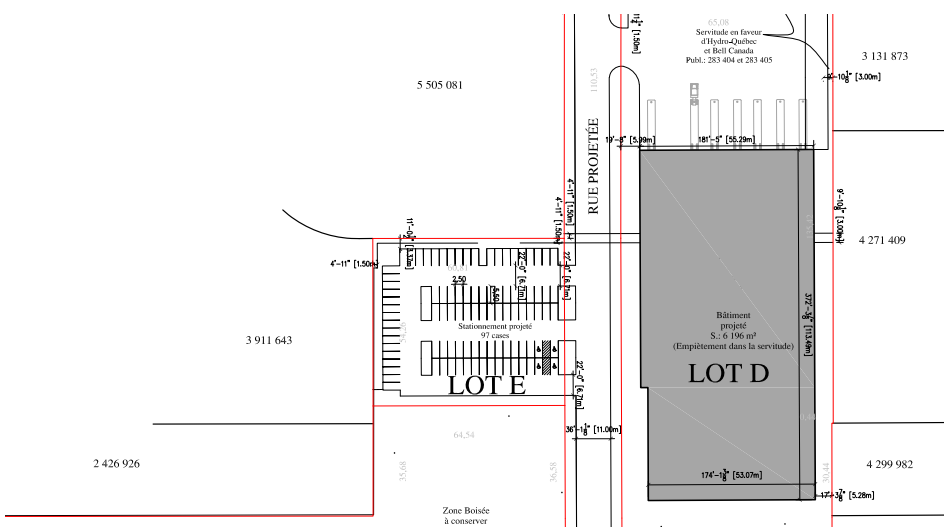
**36 231 pi. ca.**

6 quais de chargement et portes au sol  
41 places de stationnement

**BUILDING 2**

**36 231 sq. ft.**

6 loading docks and drive-in doors  
41 parking stalls



**IMMEUBLE 3**

**66 693 pi. ca.**

7 quais de chargement et portes au sol  
97 places de stationnement

**BUILDING 3**

**66 693 sq. ft.**

7 loading docks and drive-in doors  
97 parking stalls



## CONTACTEZ-NOUS | CONTACT US

### **VICTORIA TENENBOYM**

Directrice principale a la location  
*Senior leasing director*

T: +1 514 894 6505  
vtenenboym@brasswater.ca

---

### **ÉQUIPE DE LOCATION LEASING TEAM**

T: +1 514 535 4444  
leasing@brasswater.ca