



BRASSWATER

1480 Rue Bégin

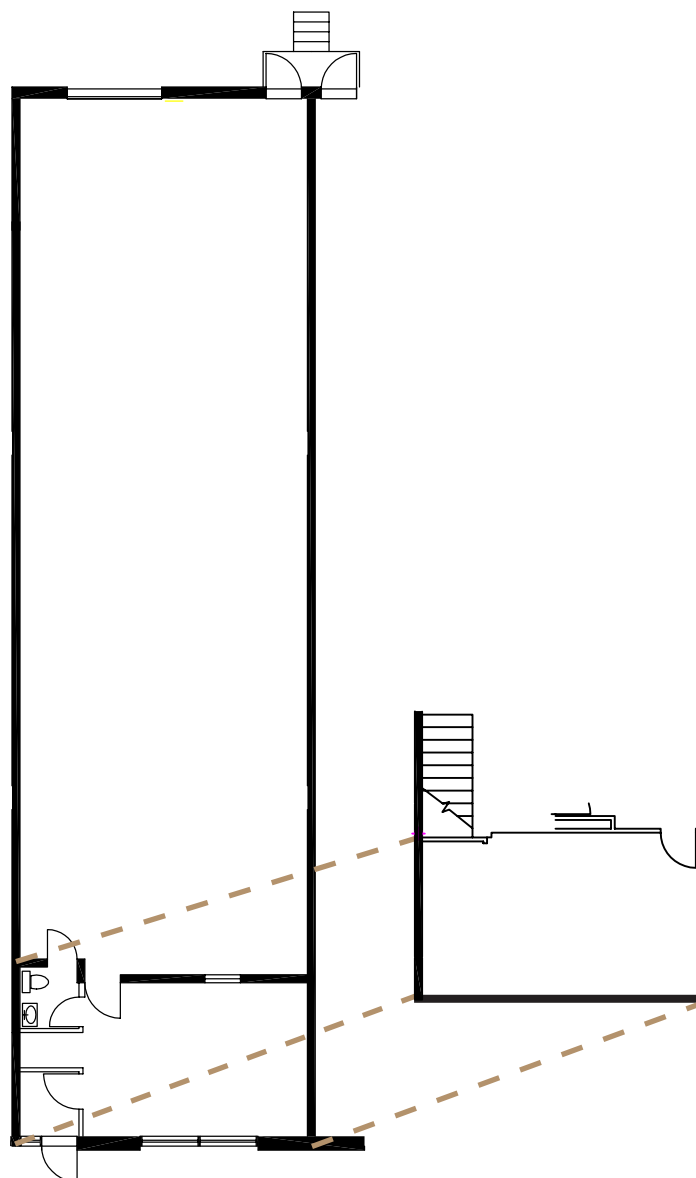
Saint-Laurent, QC

CARACTÉRISTIQUES

- 2 610 pi. ca.
- Espace bureau de 315 pi. ca.
- Avec quais de chargement
- Mezzanine de 360 pi. ca.

FEATURES

- 2 610 sq. ft.
- Office space of 315 sq. ft.
- With loading docks
- Mezzanine of 360 sq. ft.



Victoria
Tenenboym

(514) 894-6505
vtenenboym@brasswater.ca