



# 7405 TRANSCANADIENNE SAINT-LAURENT (QUÉBEC)

*86 013 PI. CA. - 86 013 SQ. FT.*

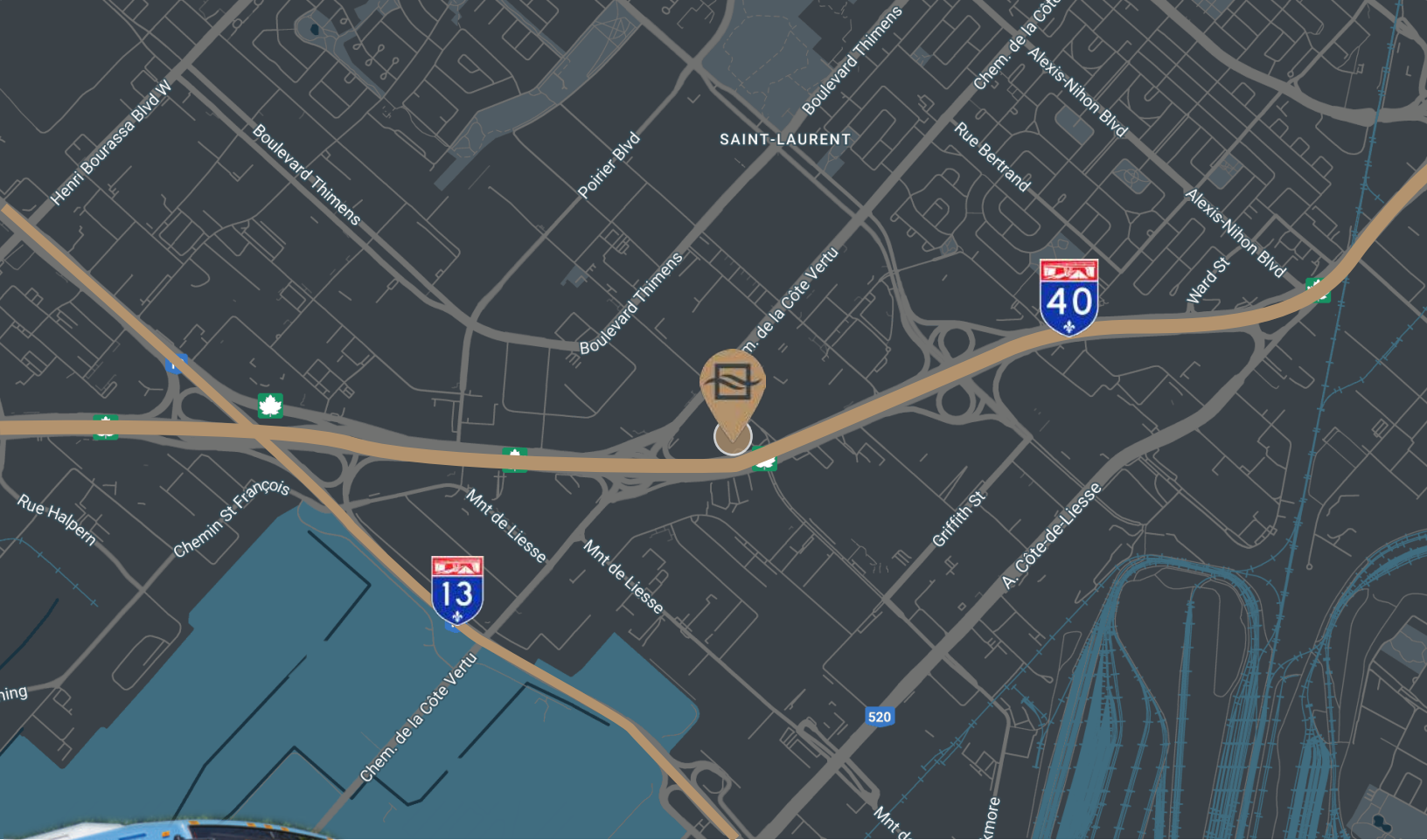
- **Transport en commun accessible** | *Easy acces to public transport*
- **Stationnement intérieur** | *Indoor parking*
- **Restaurant intérieur** | *Indoor restaurant*
- **Près du centre d'achat place vertu** | *Next to the Place Vertu mall*
- **Excellente visibilité à partir de l'autoroute** | *Exellent visibility from the highway*



BRASSWATER





<b>Zonage</b> Zoning	<b>Bureau   Office</b>
<b>Surfaces total (pi²)</b> Total Areas (sq. ft.)	<b>86 013</b>
<b>Étage</b> Floor	<b>4</b>
<b>Stationnement intérieur</b> Interior Parking	<b>28</b>
<b>Stationnement extérieur</b> Exterior Parking	<b>288</b>



 177,196  
 Métro Côte-Vertu

**ÉDUCATION**  
 27 320 BAC

**ÉDUCATION**  
 178 750  
 \$79, 423

## TRANSPORT

ACCÈS FACILE À L'AUTORO

ET/AND

EASY HIGHWAY ACCESS

## SERVICES ET COMMODITÉS | SERVICES AND AMENITIES

### BANQUES | BANKS

DESJARDINS  
CIBC  
TD CANADA TRUST  
SCOTIA BANK

### RESTAURANTS

STARBUCKS  
SUBWAY  
LA CAGE  
MCDONALD'S  
NOTRE BOEUF-DE-GRÂCE  
TIM HORTON'S  
SUSHI SHOP

### COMMERCE | SHOPS

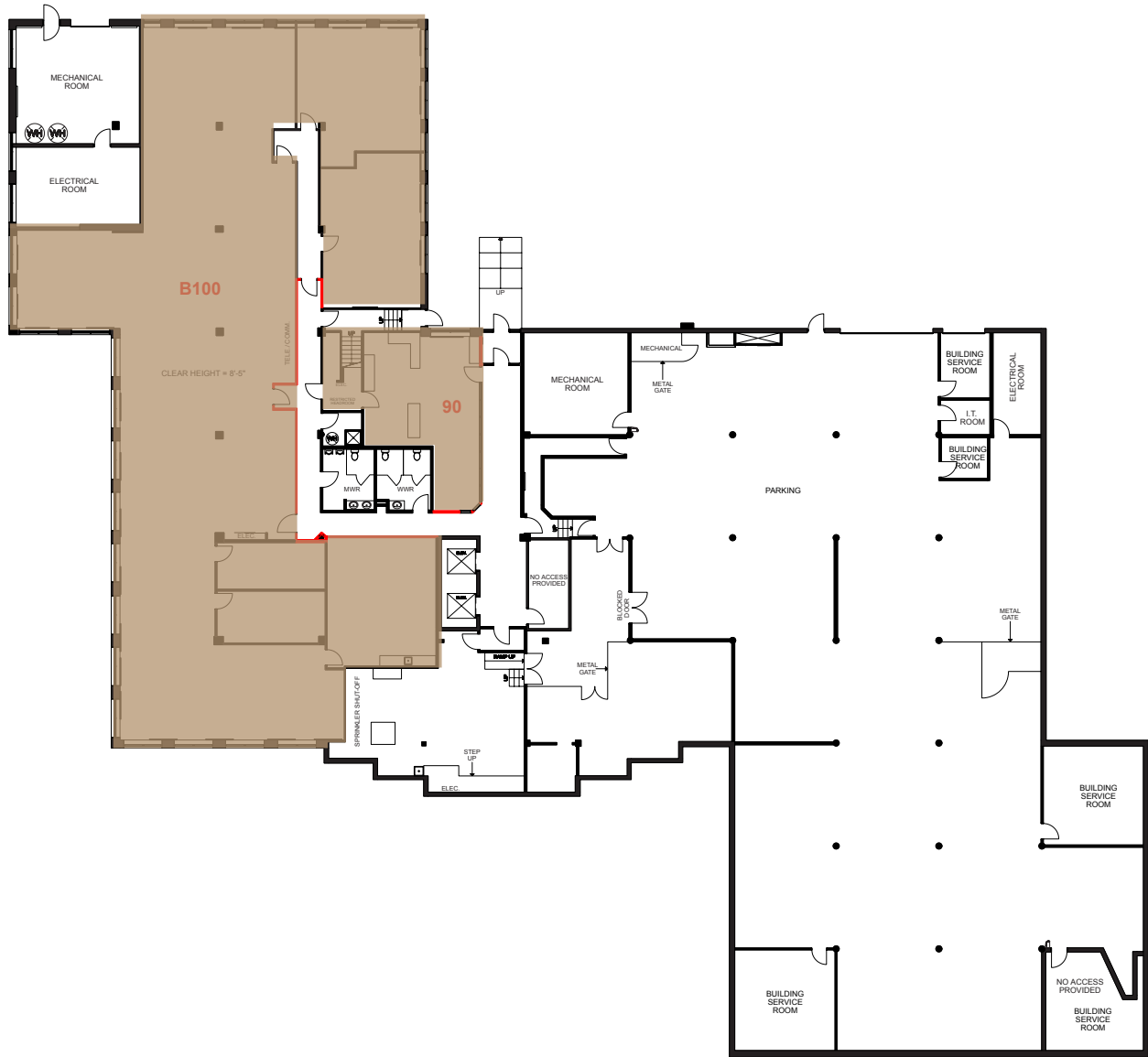
CANADIAN TIRE  
SPORTS EXPERTS  
PLACE VERTU  
ADONIS  
DOLLARAMA  
JOE FRESH  
URBAN PLANET  
TOYS R US  
WALMART  
DOLLARAMA

### HOTELS

MARIOTT  
BEST WESTERN  
HILTON GARDEN

À louer / For lease

<b>3<sup>em</sup></b>	300	320	330	340	350	360	370
<b>2<sup>em</sup></b>	200			201			
<b>RDC</b>	100						
<b>Sous-sol</b>	90	B100					



Suite: B100

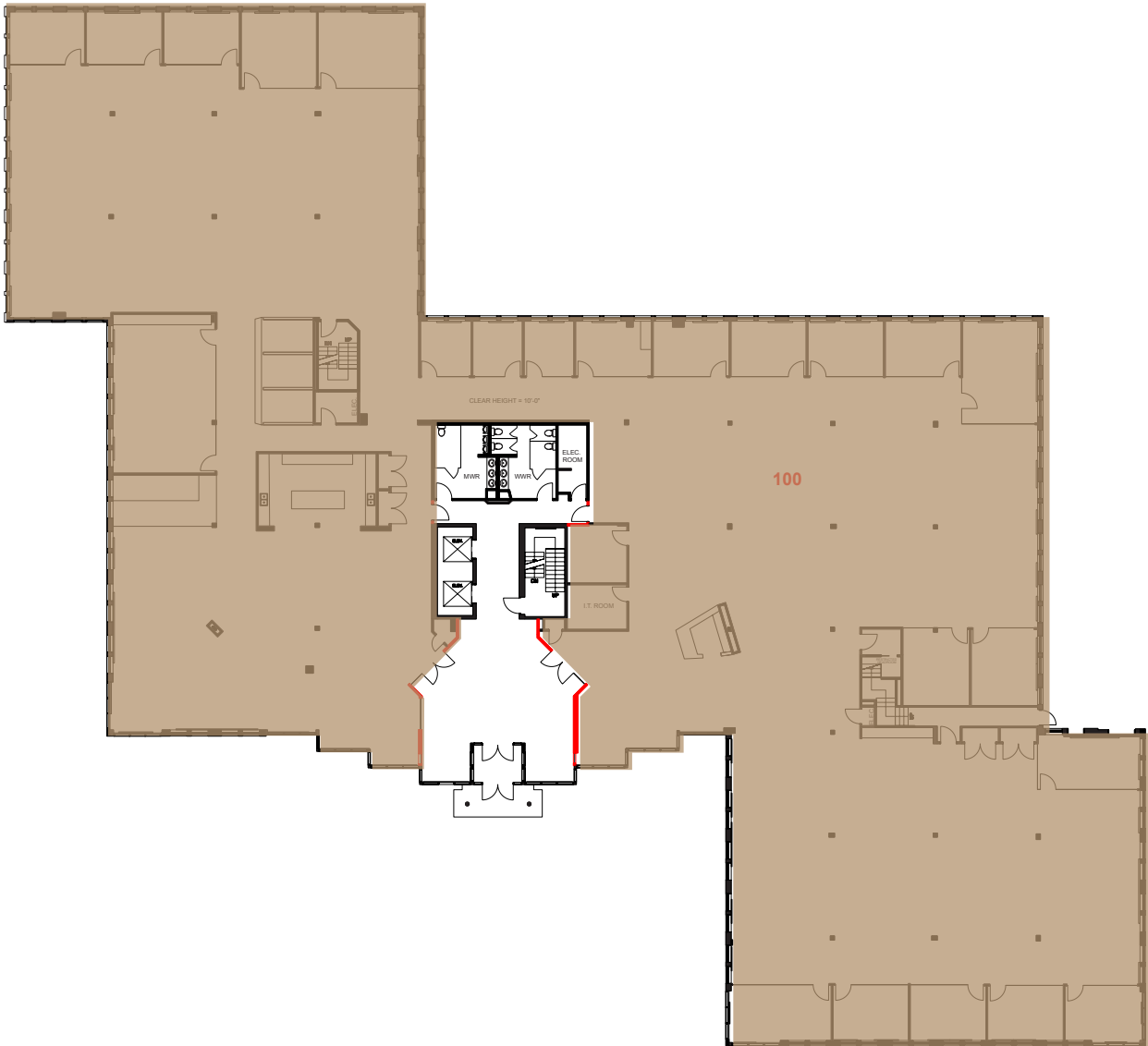
Taille: 8,317 pi. ca.

Suite: 90

Taille: 799 pi. ca.

À louer / For lease

<b>3<sup>em</sup></b>	300	320	330	340	350	360	370
<b>2<sup>em</sup></b>	200			201			
<b>RDC</b>	100						
<b>Sous-sol</b>	90	B100					

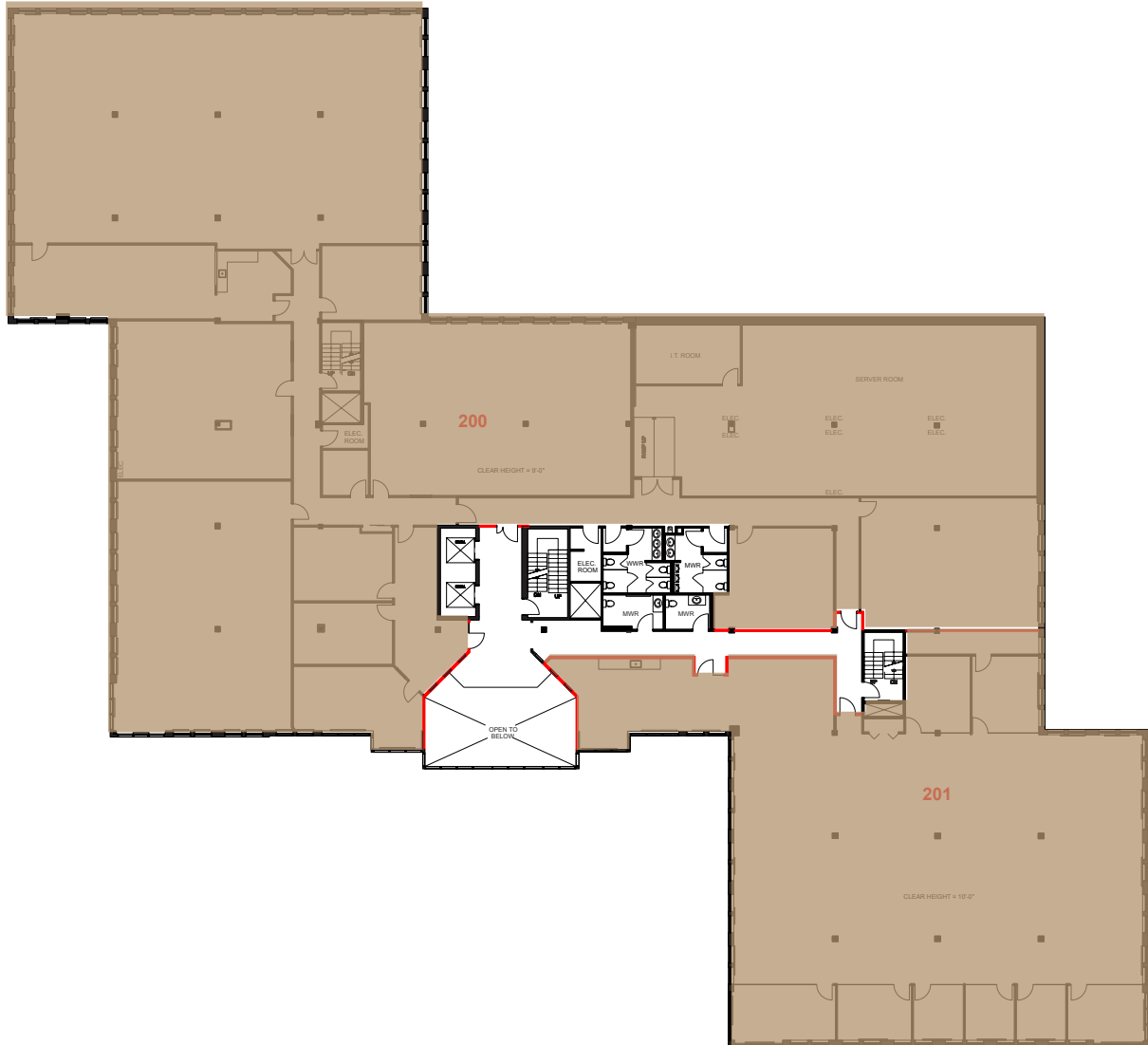


Suite: 100

Taille: 25,445 pi. ca.

À louer / For lease

<b>3<sup>em</sup></b>	300	320	330	340	350	360	370
<b>2<sup>em</sup></b>	200			201			
<b>RDC</b>	100						
<b>Sous-sol</b>	90	B100					



Suite: 200

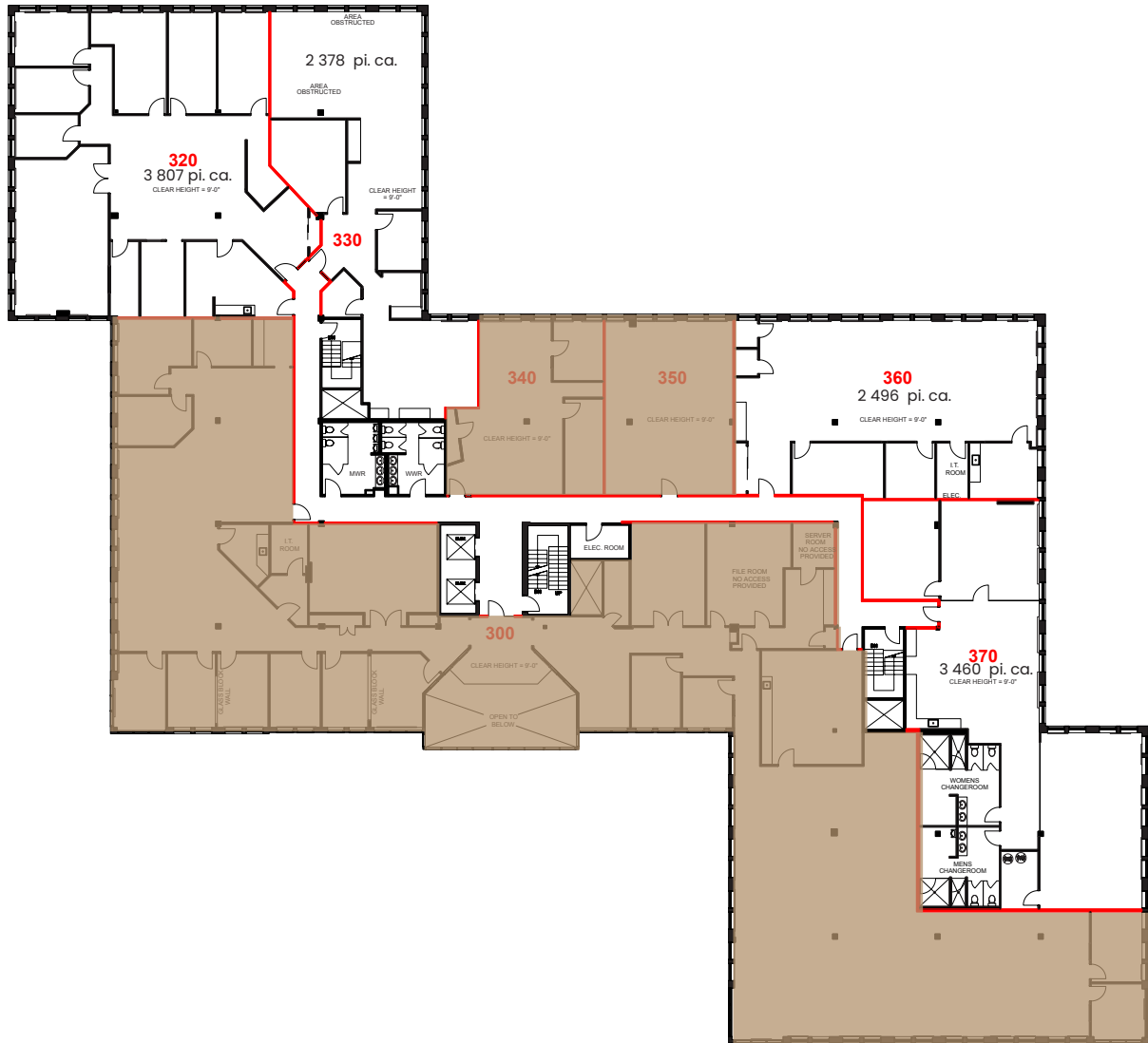
Taille: 18,349 pi. ca.

Suite: 201

Taille: 7,335 pi. ca.

À louer / For lease

<b>3<sup>em</sup></b>	300	320	330	340	350	360	370
<b>2<sup>em</sup></b>	200			201			
<b>RDC</b>	100						
<b>Sous-sol</b>	90	B100					



Suite: 300

Taille: 11,338 pi. ca.

Suite: 340

Taille: 1,124 pi. ca.

Suite: 350

Taille: 1,031 pi. ca.



## CONTACTEZ-NOUS – CONTACT US

### **BEATRICE LONGO**

Agente à la location

Leasing Agent

T: +1 514 582 2873

blongo @brasswater.ca

---

### **ÉQUIPE DE LOCATION**

**LEASING TEAM**

T: +1 514 535 4444

leasing@brasswater.ca



**BRASSWATER**